

**NOW WITH
TEXT!**

eztracker@trbo™: simple tracking and messaging

Text and locate Motorola MOTOTRBO™ 2-way radios

Real-time tracking of your assets using MOTOTRBO GPS-enabled radios!

eztracker@trbo™ is a single position application to monitor at all times the whereabouts of your fleet using Google Maps and contact them via text messaging. Tether your base station to any PC and use it for voice calls at the same time.

- Visualize the individual position of each radio
- Monitor if your vehicles are heading into traffic and reroute them appropriately
- Selected a radio to center the map on it
- Text individual or group of radios

Extremely simple to configure and affordable!

eztracker@trbo™ answers the requests of many customers that are mostly interested in locating their subscribers, without incurring into the cost burden of un-necessary features. It also does not require a dedicated server or workstation thus minimizing the overall TCO.

eztracker@trbo™ runs on any Microsoft Windows PC with internet access and tethered via the standard USB programming cable to a MOTOTRBO radio used as a control station. This radio can simultaneously act as a traditional base station and operated for voice calls using the microphone connected to the radio. In addition, eztracker@trbo™ can also support a second (and a 3rd one for Enhanced GPS) control station for conventional GPS revert operation to offload the GPS reporting to a data channel.

eztracker@trbo™ only displays active radios that have registered their presence, thus reducing confusion with others that are turned off or out-of range.

It is truly easy to install and intuitive to operate, requiring minimal or no training.

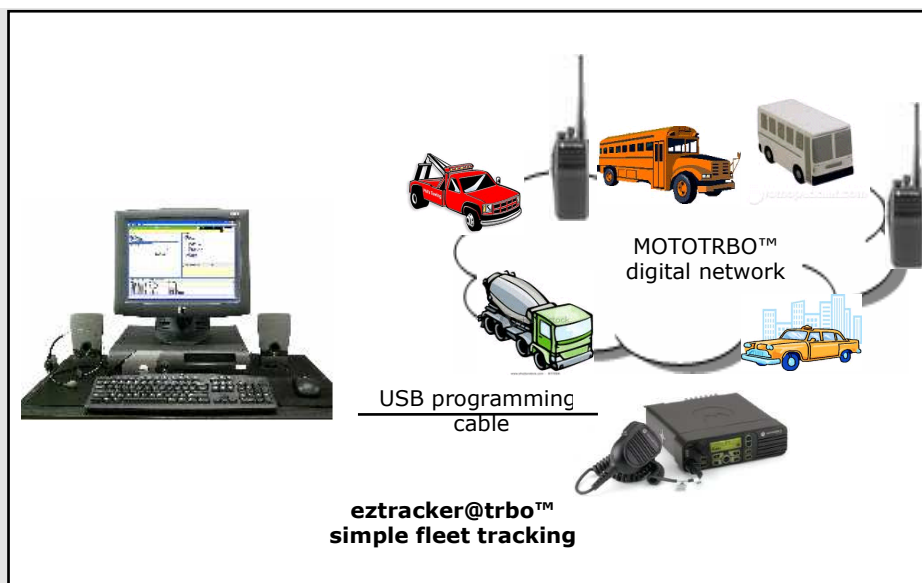
The map can be shared with other users using a web server installed on the same PC or by remote management software.

Selected Features

- Single or GPS revert configuration
- Conventional, IP site connect and Capacity Plus
- Displays up to 100 subscribers
- Uses ARS for active radio presence
- Google Maps with optional live traffic
- Different views and zoom levels
- Displays radio position and speed
- Period or immediate location refresh
- Radio aliasing
- Highlight selected radio on the map
- Text a talkgroup or an individual radio
- Log all messages, and reply or forward them
- Excel-compatible logs (CVS format)
- Rapid deployment
- Direct MOTOTRBO™ radio interface

Typical Applications:

- Transportation
- Hospitality
- Education
- Rentals
- Other commercial markets



eztracker@trbo™ – MOTOTRBO™ fleet tracking and messaging

Features

- Single radio (1 slot) or dual radio configuration with GPS revert (2 slots)
- Support MOTOTRBO conventional, IP Site Connect, Capacity Plus and LCP
- Direct USB to radio interface for MOTOTRBO signaling
- MOTOTRBO ARS services for individual radio presence
- MOTOTRBO GPS services for location reporting
- MOTOTRBO TMS services for text messaging
- Supports Google Maps with live traffic and temperature information
- Support for maps, satellite, hybrid and terrain views
- Maps can be zoomed and panned
- Maps refresh is limited to a programmable time to reduce internet access
- Freeze map refresh
- Active list of radios (can be aliased)
- Global and individual radio reporting
- Immediate location reporting
- Highlighting on the map of selected radio
- Location recording and playback to Excel-compatible CVS format
- Application can be automatically started with Windows

Easy to deploy

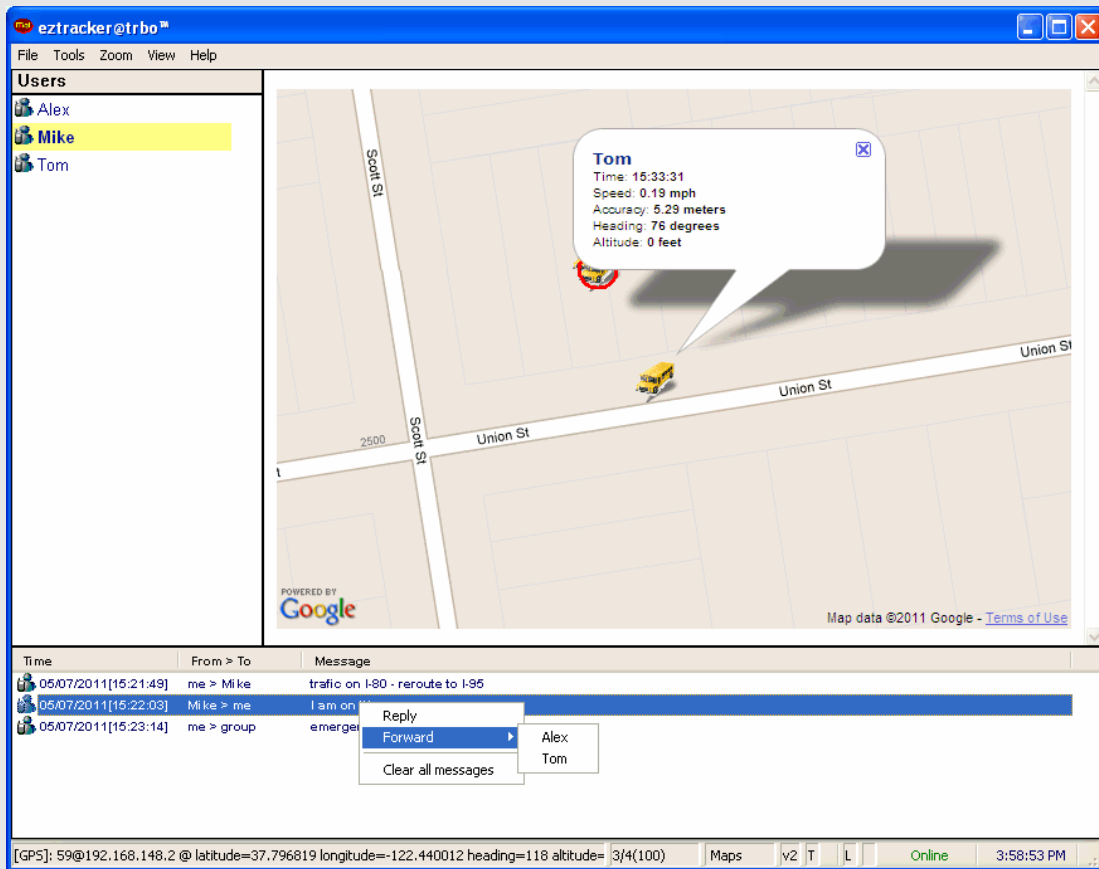
- Runs on any customer Microsoft Windows PC
- Radio connection: standard MOTOTRBO™ mobile USB programming cable

Configurations:

- Normal: 25 subscribers
- Enhanced: 100 subscribers and GPS revert
- Advanced: 200 subscribers and GPS revert
- Trial: 3 radios and GPS revert

Professional services:

- Customizations available for special requirements



TABLETmedia, Inc.
3035 Scott Street
San Francisco, CA 94123
Tel: +1 (415) 567-8100

http://www.tabletmedia.com - 2/13
Copyright © 2001-2013 TABLETmedia, Inc. – All rights reserved.
TABLETmedia eztracker@trbo™, phone@trbo™, text@trbo™,
iTalkie™ and iFon™ are trademarks of TABLETmedia, Inc.
All other trademarks belong to their respective companies.